

# CHANGE TO THE MATERIAL OF DEFLECTION PULLEY 55433

TECHNICAL INFO NO. 1038

## VEHICLE MANUFACTURER / MODELS:

<b>Audi</b>	A3
<b>Seat</b>	Cordoba, Ibiza III, Inca, Leon, Toledo II
<b>Skoda</b>	Fabia, Octavia
<b>VW</b>	Bora, Caddy II, Fox, Golf IV, New Beetle, Polo, Spacefox, Crafter

## APPLIES TO ENGINES:

1.9 D, 1.9 TDI, 1.9 SDI, 2.5 TDI

## APPLIES TO PART NO.:

<b>RUVILLE-No.</b>	<b>OE-No.:</b>
55433	038 109 244 M (current)
	038 109 244 B (replaced)
	038 109 244 C (replaced)
	038 109 244 H (replaced)

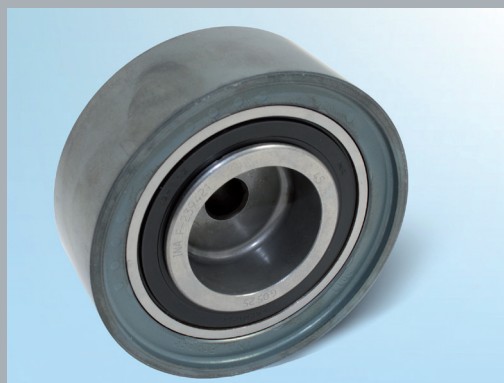
## IMPORTANT NOTE!

Both deflection pulleys can be used universally for all vehicles detailed in the catalogues, despite their different designs.

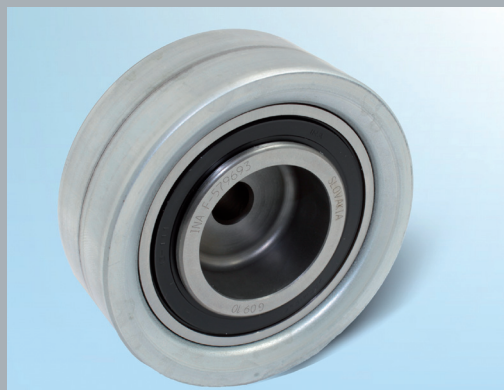
Note the specifications of the vehicle manufacturer!

As part of our continuous efforts to improve our products, the running surface material of deflection pulley 55433 has been changed from sintered metal to sheet metal.

During the changeover period, deflection pulleys with sintered metal or sheet metal running surfaces may be supplied.



**Image 1:** Previous sintered metal version



**Image 2:** New sheet metal version



## INFORMATION

Corresponding spare parts can be found in our online catalogue at [www.ruville.de](http://www.ruville.de). Where reference is made to the spare parts numbers of the vehicle manufacturers, this is only for the purposes of comparison.