

NEW VALVE TRAIN PRODUCT FOR LIGHT COMMERCIAL VEHICLES

TECHNICAL INFO NO. 1058

VEHICLE MANUFACTURER/MODELS:

Citroën	Jumper
Fiat	Ducato
Ford	Transit
Land Rover	Defender
Peugeot	Boxer

APPLIES TO ENGINES:

2.2 HDI, 2.2 D, 2.2 TDCi, 2.4 TDCi, 3.2 TDCi, 2.4 Td4, 2.2 HDI

APPLIES TO PART NO.:

	RUVILLE-No.	OE-No.:
Citroën	235208	0903.H2
Fiat	235208	9660132280
Ford	235208 235209	6C1Q-6K551-BA, 1425513 7C16-6K551-AB, 1459459
Land Rover	235208	LR004443
Peugeot	235208	0903.H2

IMPORTANT NOTE!

When they need replacing the entire assembly should be replaced. Replacing individual components is not possible due to the design.

Note the specifications of the vehicle manufacturer!

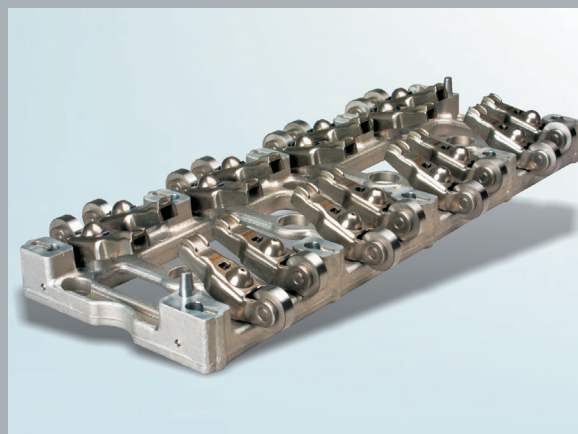


Image 1: Rocker arm body 235208

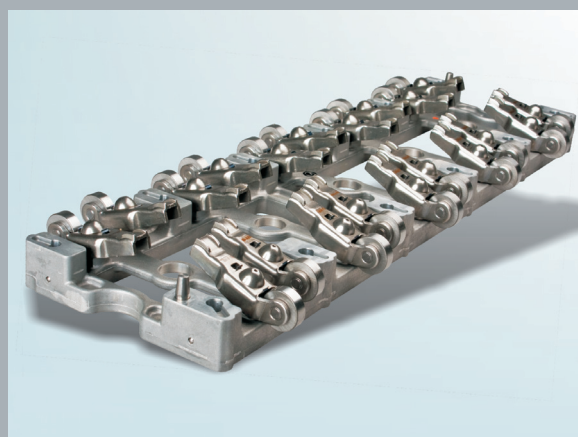


Image 2: Rocker arm body 235209

The vehicle manufacturers Citroën, Fiat, Ford, Land Rover and Peugeot are now introducing a new range of diesel engines conforming to the Euro 4 exhaust emission standard. One distinctive feature of these engines is the aluminium rocker arm body for the valve train (see image 1 and 2), which has been developed by the RUVILLE. The rocker arm body is already assembled as a complete unit in the original equipment. The advantages of the new unit include reduced engine weight as well as reduced noise.



INFORMATION

Corresponding spare parts can be found in our online catalogue at www.ruville.de. Where reference is made to the spare parts numbers of the vehicle manufacturers, this is only for the purposes of comparison.