

# VISUAL DIFFERENCES IN THE OVER-RUNNING ALTERNATOR PULLEY

TECHNICAL INFO NO. 1074

## VEHICLE MANUFACTURER/MODELS:

<b>Ford</b>	Focus II
<b>Volvo</b>	S40 II, V50, C70 II

## APPLIES TO ENGINES:

<b>Ford</b>	2.5 ST
<b>Volvo</b>	2.4, 2.4 i, 2.4 D5, 2.5,

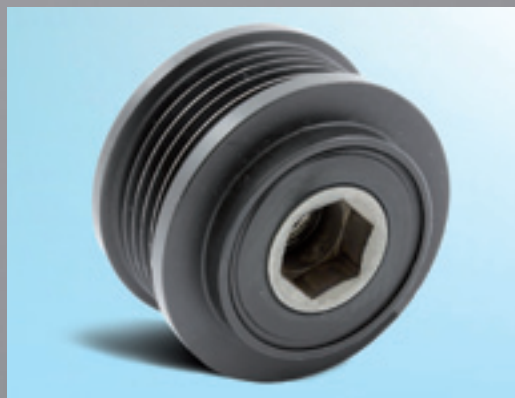
## APPLIES TO PART NO. :

<b>RUVILLE-No.</b>	59981
--------------------	-------

### IMPORTANT NOTE!

The two over-running alternator pulleys fully comply with the technical requirements and only differ in their appearance.

Note the specifications of the vehicle manufacturer!



**Image 1:** Production version



**Image 2:** Aftermarket version

Two different over-running alternator pulley versions can be installed in the models mentioned above.

**Image 1** shows the production over-running alternator pulley, which is installed by the corresponding vehicle manufacturer.

**Image 2** shows the over-running alternator pulley offered by Schaeffler Automotive Aftermarket for the spare parts market.



### INFORMATION

The corresponding spare parts can be found in our online catalogue at [www.ruville.de](http://www.ruville.de)

Any reference to replacement part numbers for vehicle manufacturers is for comparison purposes only.

EGON VON RUVILLE GmbH

Billbrookdeich 112 • 22113 Hamburg • Germany

Tel.: +49 (0)40 73344-0 • Fax: +49 (0)40 73344-199

[info@ruville.de](mailto:info@ruville.de) • [www.ruville.de](http://www.ruville.de)