

VISUAL DIFFERENCES IN OVER-RUNNING ALTERNATOR PULLEY 57713

TECHNICAL INFO NO. 1090

VEHICLE MANUFACTURER / MODELS:

Suzuki | Jimny (FJ)

APPLIES TO ENGINES:

1.5 DDiS

APPLIES TO PART NO.:

RUVILLE-No.	OE-No.
57713	31171-84A10

IMPORTANT NOTE!

Both versions comply with the technical specifications and can be used without restrictions.

Note the specifications of the vehicle manufacturer!

As part of our continuous efforts to improve our products, modifications have been made to the over-running alternator pulley with part number 57713.

This Technical Information sheet shows the visual features of the previous version (Figures 1 and 3) and the new version (Figures 2 and 4).

In the new version, the inner ring on the rear side has been extended, so the spacer that can be seen in Figure 3 is no longer required.

During the transition period, we may have mixed stocks of both types.



Figure 1: Previous design

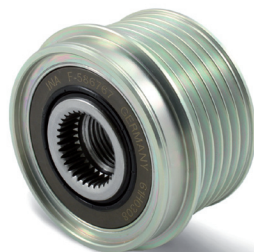


Figure 2: New design



Figure 3: Previous design



Figure 4: New design



INFORMATION

Corresponding spare parts can be found in our online catalogue at www.ruville.de. Where reference is made to the spare parts numbers of the vehicle manufacturers, this is only for the purposes of comparison.