

CHANGE TO THE PULLEYS OF SOME TENSIONING ARMS FOR THE ACCESSORY DRIVE

TECHNICAL INFO NO. 1097

VEHICLE MANUFACTURER / MODELS:

Audi, Ford, Renault Trucks, Seat, Škoda, VW

APPLIES TO PART NO.:

RUVILLE-No.:

58818
55738
55241
55754
56313

Extensive vehicle applications can be found in our catalogue.

IMPORTANT NOTE!

During the transition period, we may have mixed stocks of both designs. Both versions meet the technical requirements and can be used without restriction for the vehicles specified in the catalogues.

Note the specifications of the vehicle manufacturer!

With immediate effect, RUVILLE is offering versions with modified pulleys for the tensioning arms listed.

As shown in Image 1, the differences are the coating (previously black, now metallic grey) and the link between the two halves of the pulley (previously riveted, now clinched).

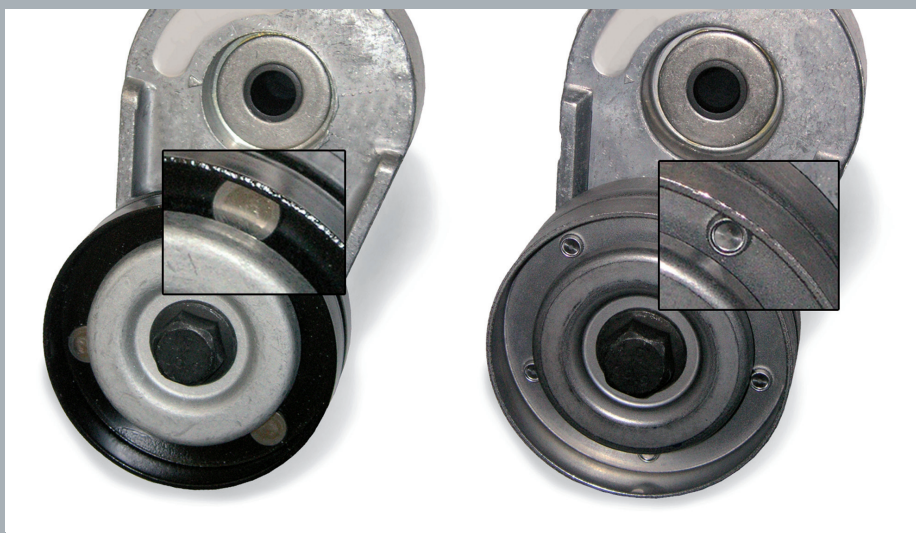


Image 1: Detailed view of the pulleys in the previous design (left) and the new design (right)



INFORMATION

Corresponding spare parts can be found in our online catalogue at www.ruville.de. Where reference is made to the spare parts numbers of the vehicle manufacturers, this is only for the purposes of comparison.