

VISUAL DIFFERENCES OF THE TENSIONING PULLEY 55766

TECHNICAL INFO NO. 1963

APPLIES TO MAKE/MODEL:

Audi:	A2, A3, A4, A6
Seat:	Altea, Leon, Toledo III
Škoda:	Octavia
Volkswagen:	Golf V, Golf V Plus Jetta III, Passat, Touran

APPLIES TO ENGINES:

2.0 TDI, 2.0 TDI 16V

APPLIES TO PART NO.:

No.	RUVILLE ref.	OE ref.
1.	55766	03G 109 243

As part of the ongoing development of our products, the tensioning pulley 55766 has been modified.

This Technical Information shows the visual characteristics of the old version and the new version.

IMPORTANT NOTE:

The old version of the tensioning pulley is not made completely redundant and can still be used and assembled in accordance with the instructions provided by the manufacturer! When assembling the new version, ensure that the surface coat of the tensioning pulley is not damaged!

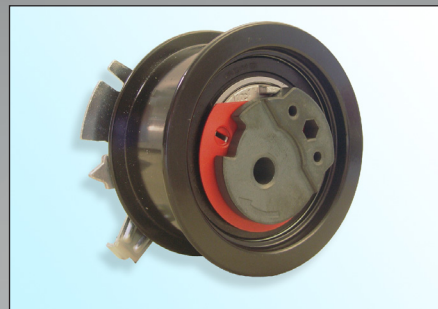


Fig. 1: 55766 (old version)

Visual characteristics:

- Cam made from sinter metal
- Surface coat E-Coat (black)
- black bearing seal

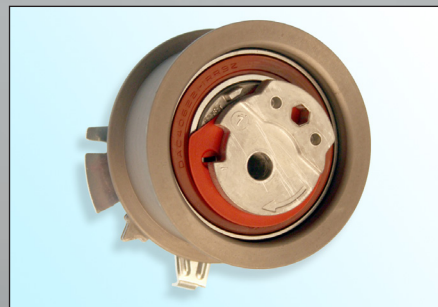


Fig. 2: 55766 (new version)

Visual characteristics:

- Cam made from cast aluminium
- Surface coat Zinc phosphorous (light brown)
- brown or black bearing seal

**INFORMATION**

The corresponding spare parts can be found in our online catalogue at www.ruville.de